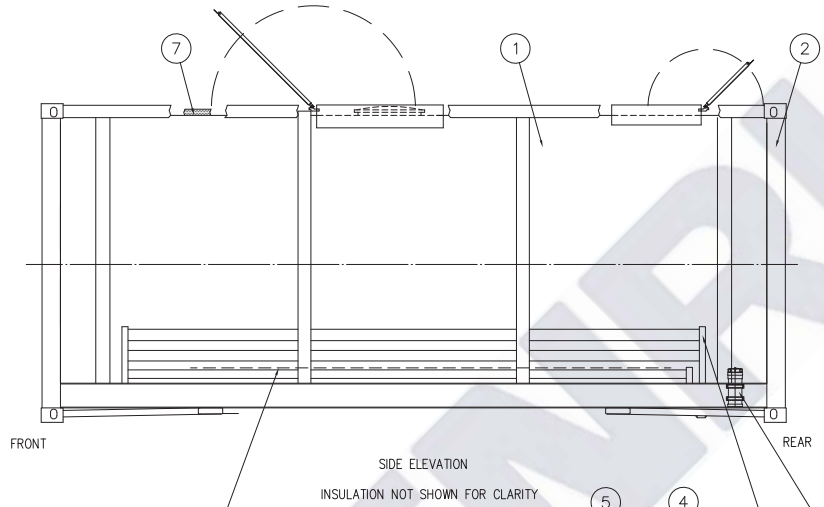
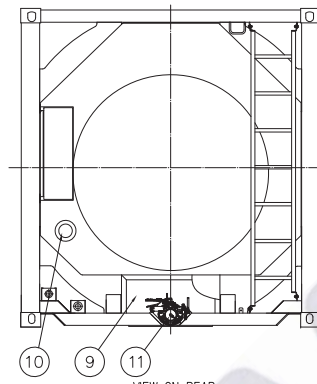


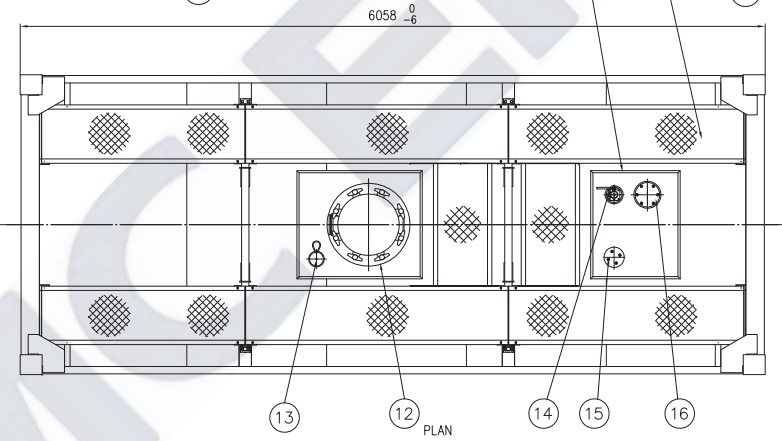
VIEW ON FRONT



SIDE ELEVATION
INSULATION NOT SHOWN FOR CLARITY

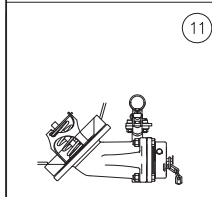


VIEW ON REAR



PLAN

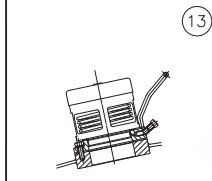
SPECIFICATION	
CODES AND REGULATION	UN portable tank (T11 IMDG, CFR49, ADR/RID), UIC, TIR, CSC, TC, ADR L4BN, ASME DIV.1/EN14025, ISO 1496-3
M.P.G.M.	36000 kg (79365 lbs)
TARE MASS(NOMINAL)	3650 kg (8045 lbs)
PAYLOAD	32350 kg (71320 lbs)
M.A.W.P.	TANK 4 BAR HEATING COILS 4 BAR
HYDROSTATIC TEST PRESSURE	TANK 6 BAR HEATING COILS 6 BAR
EXTERNAL DESIGN PRESSURE	0.41 BAR
LEAKAGE TEST PRESSURE	1 BAR
TANK MATERIAL	SANS 50028-7 1.4402, Equivalent to 316L Cc0.03%
CONTAINER SIZE	6058mm lg x 2438mm wide x 2591mm high
TANK SIZE (INTERNAL)	2383 mm I/DIA x 5988 mm lg
VESSEL DESIGN TEMPERATURE	-40°C~+130°C (-40 °F~266 °F)
RADIOGRAPHY	SHELL ALL "T" JOINTS DISHED END(100%)
CAPACITY(-1,+1.5%)	25000 LITERS (6605 US GALLONS)
INSULATION: SHELL,HEADS	SHELL: 50mm ROCKWOL WHERE POSSIBLE ENDS: 50mm ROCKWOL WHERE POSSIBLE
INSULATION:UNDER CLADDING OVERLAP	50mm COMPRESSED ROCKWOL WHERE POSSIBLE
CLADDING SHELL MATL/COLOR	1.8mm GRP (RAL9010)
CLADDING HEADS MATL/COLOR	2.0mm GRP (RAL9010)
FRAME PROTECTION COAT	30μ+30μ+60μ(3 layers)
TOP COAT COLOR	SUIT TO CUSTOMER
SHELL ANTI STRESS CORROSION LACQUER	100μm
INSPECTION AUTHORITY	BV



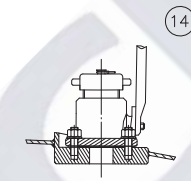
3" BSP BOTTOM OUTLET ASSEMBLY



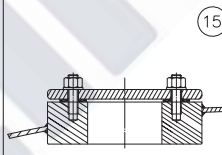
500mm MANWAY ASSEMBLY



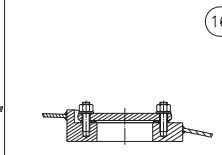
2.5" BSP RELIEF VALVE ASSEMBLY



1.5" BSP AIRLINE ASSEMBLY



DN50 SPARE CONNECTION



3" TOP OUTLET PROVISION

REVISION	DATE	MODIFICATION	MOD BY
F	2017.07.21	1. Remove the anti theft of ladder, spillage box, bottom outlet, walkway and data plate. 2. Thermometer changed.	Fu QC
E	2017.07.20	Bottom valve changed from 30" to 45"	Fu QC
D	2017.05.19	1. The nut of ladder, spillage box, walkway and data plate should be lock with. 2. Thermometer add a protect plate. 3. Add bottom outlet box cover, the nut of bottom outlet should be lock with. 4. The tare changed.	Fu QC
C	2017.03.30	DETAILS IN SPECS.	HPF
B	2017.03.28	DETAILS IN SPECS.	HPF
A	2017.03.20	NEW DRAWING	HPF

ITEM	DESC. NO.	NAME	QTY.	MATERIAL	EACH.WT	TOT.WT	REMARKS
16		3" TOP OUTLET PROVISION	1				
15		DN50 SPARE CONNECTION	1				
14		1.5" AIRLINE ASSEMBLY	1				
13		2.5" BSP RELIEF VALVE ASSEMBLY	1				
12		500mm MANWAY ASSEMBLY	1				
11		3" BSP BOTTOM OUTLET ASSEMBLY	1				
10		THERMOMETER	1				
9		BOTTOM OUT TRAY	1				
8		REMOTE CLOSURE	1				
7		INSULATION AND CLADDING ASSEMBLY	1				
6		DOCUMENT HOLDER	1				
5		SPILLAGE ASSEMBLY	1				
4		WALKWAY ASSEMBLY	1				
3		HEATING & RING ASSEMBLY	1				
2		FRAMEWORK ASSEMBLY	1				
1		VESSEL ASSEMBLY	1				

OWNED BY: (25m³)

BOXSOL BOXSOL PTY LTD
15 Shaw Court, Success, Western Australia 6154
A/N: 6219820219

DES.	Fu QC	STAND.	QTY.	NAME	GENERAL ARRANGEMENT
CHK.	Jiang KF	CHT.	MATERIAL	DWG.NO.	PCF01-02956
REV.	Fu WX	SIG.	WEIGHT	SCALE	1:40
ORA.		DATE	2017.7.21	ISSUE	F
				SCALE	1:40
					SHEET NO. 1 OF 1

THIS DRAWING AND ALL COPIES THEREOF ARE CONFIDENTIAL AND THE PROPERTY OF CIMC-NANTONG. ANY PART DRAWING SHALL NOT BE COPIED, REPRODUCED, DISCLOSED OR DISTRIBUTED TO A PARTY WITHOUT PRIOR WRITTEN APPROVAL FROM CIMC-NANTONG.