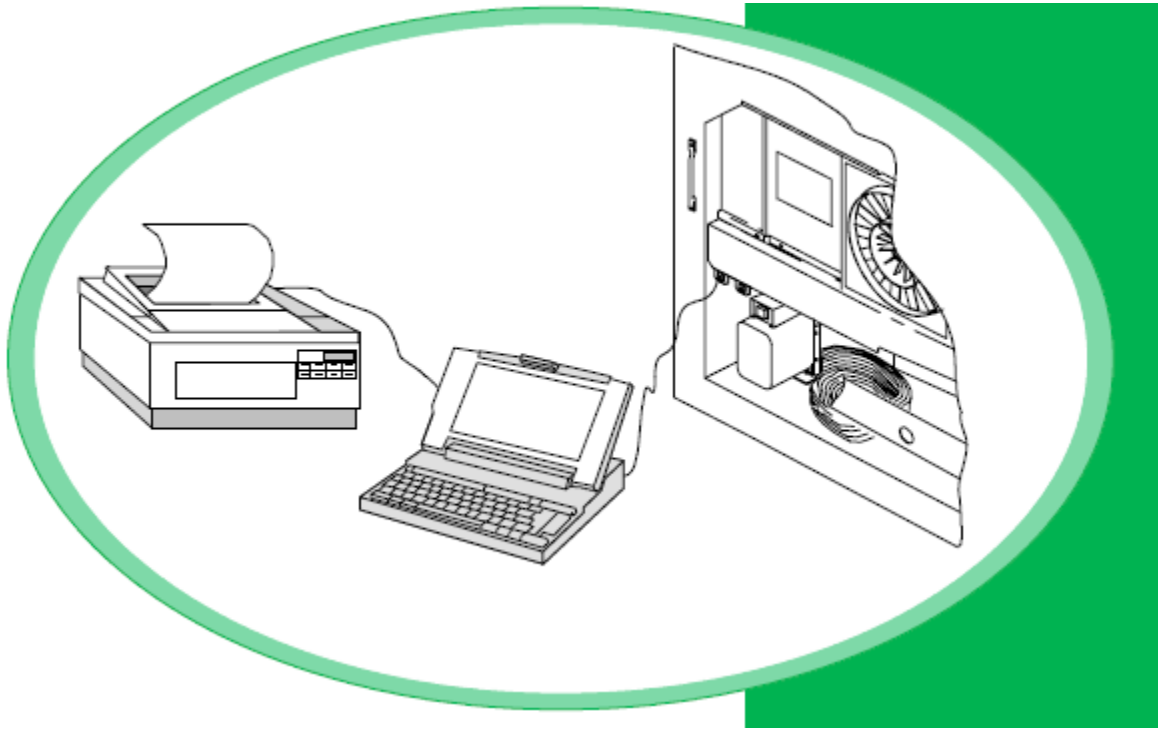
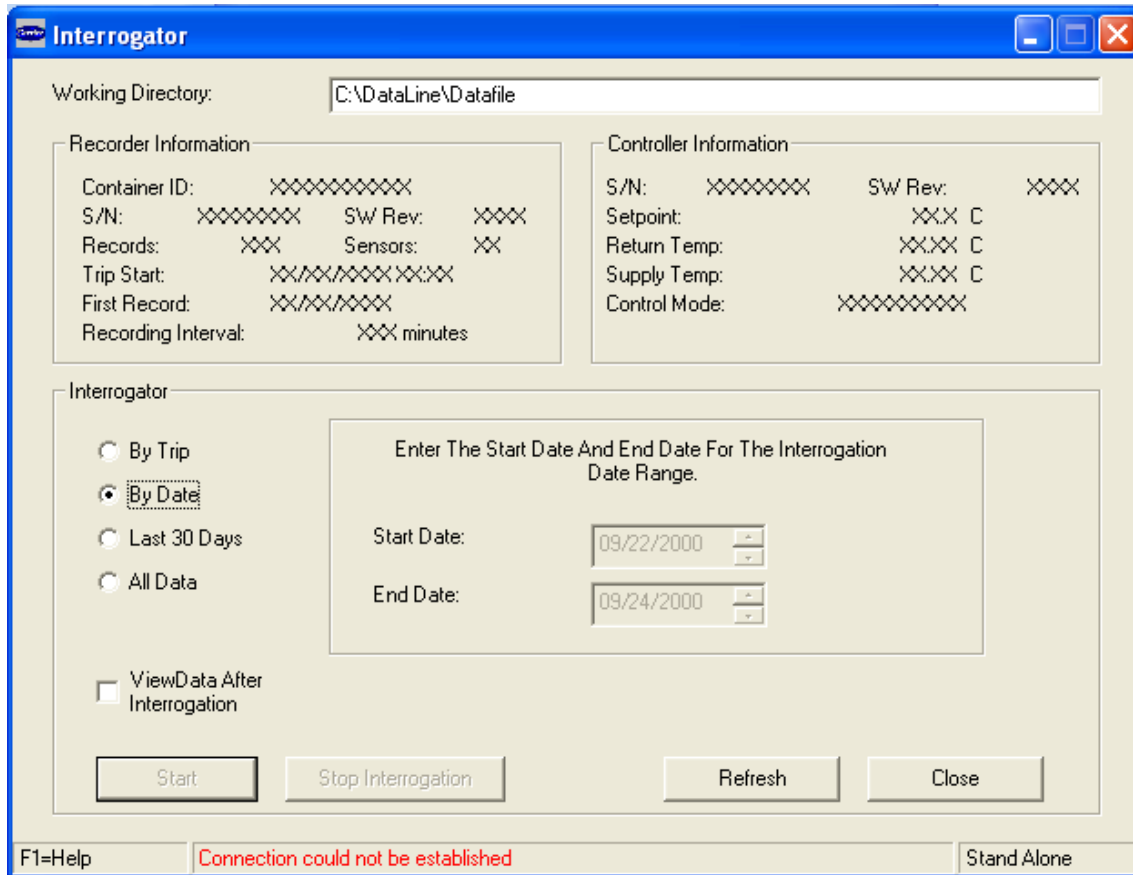
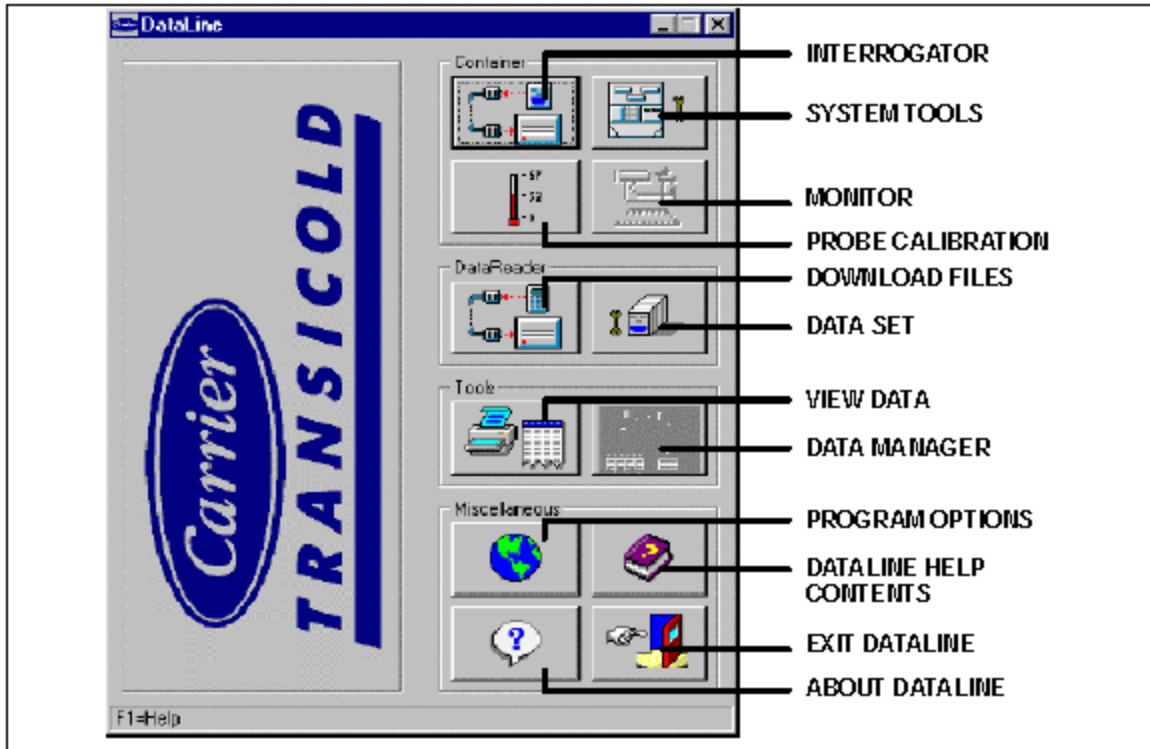


Data line Programs



Data line is used to analyze the reefer machinery and download data. The machinery controller has the Data Coder which records machinery parameters hourly including on/off switch, Alarm, Defrost, Return and Supply temperature

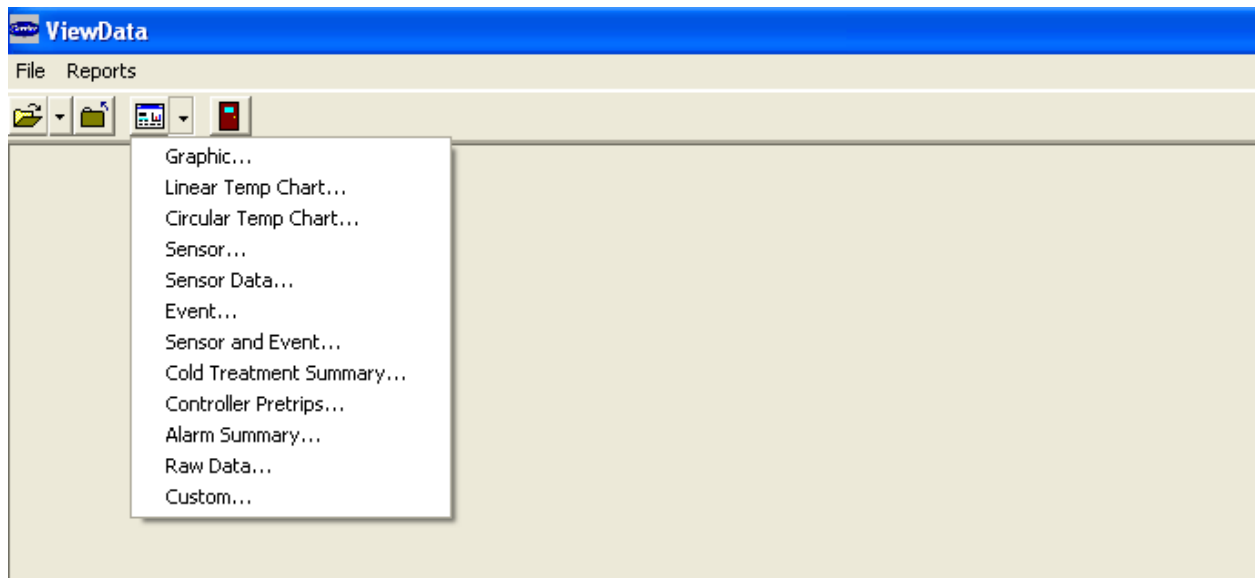
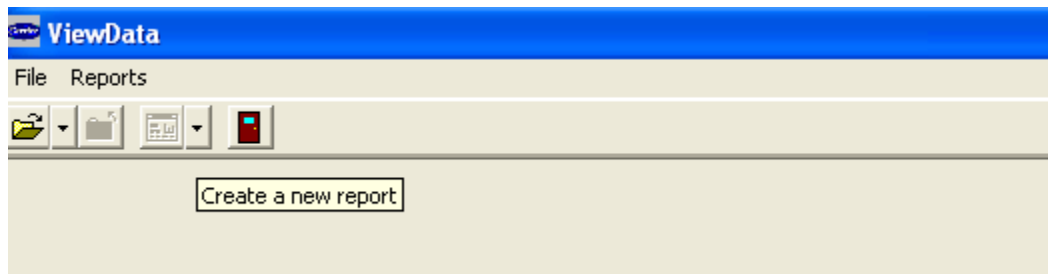
For Downloading, first open the program and connect Cable Download with Port Interrogator Connector then Click → INTERROGATOR



Data can be downloaded in the following four selections:

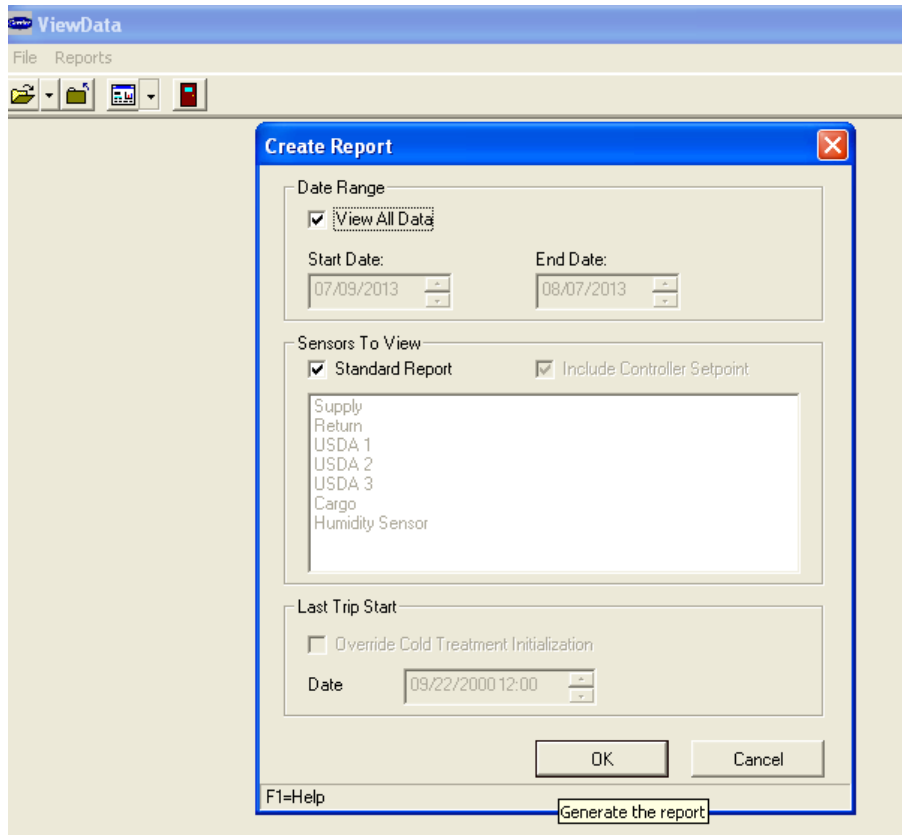
1. By Trip
2. By Date
3. Last 30 Days
4. All Data

After successful download, the user can see the data by Click → VIEW DATA and select appropriate file then Click → Create a new reports



The user can select to view various information such as Graphic, Sensor etc.

Let's take Sensor information as example, Click→Sensor then Click →OK



Sensor Data information – Report View



Sensor Report For RHLU3316467 Jul 09, 2013 to Aug 07, 2013

System Configuration at the Time of Interrogation:

Interrogated On Aug 07, 2013
Extracted By DataLine Rev 1.8.0

Controller Software: 5148
Controller Serial #: 04893451

Bill of Lading #:
Origin: Origin Date:
Destination: Discharge Date:
Comment:

Probe Calibration Readings: USDA1 0.0 USDA2 0.0 USDA3 0.0 Cargo 0.0

Temperature Units: Centigrade

Jul 09, 2013

Setpoint: -30.00, O2: OFF, CO2: OFF, Container: RHLU3316467, Serial: 04893451

Time	SupAir	RetAir	USDA1	USDA2	USDA3	Cargo	RH
01:00	-25.58	-23.19	OUTRNG	OUTRNG	OUTRNG	OUTRNG	64.05
02:00	-23.40	-20.36	OUTRNG	OUTRNG	OUTRNG	OUTRNG	OFF
03:00	-14.00	-13.81	OUTRNG	OUTRNG	OUTRNG	OUTRNG	OFF
04:00	-4.65	-5.04	OUTRNG	OUTRNG	OUTRNG	OUTRNG	OFF
05:00	1.06	5.52	OUTRNG	OUTRNG	OUTRNG	OUTRNG	93.06

Sensor Data information – Graphic View



Container: RHLU3316467, Serial: 04693451

SetPoint SupAir RetAir

